

6 Amp Distribution Controller UL; ULC Listed

- Input 120/240vac
- Output 12/24vdc total of 7.5Amp
- 8 output rated at max. 2.0Amp
- Battery Charger: 1.5Amp
- Battery Capacity up to 17Ah
- Listing: ULC608939-11-1, ULC-S533 Egress Door, UL294, EMC: Industry Canada FCC, EN



Technical Specifications

Output Voltage	12/24 Vdc Regulated. Class E, unsupervised
Output Amperage	6 Amp
Ripple	50 mVp-p max
Charging Current	1.5A Max, and not part of max output rating
Battery Charging Voltage	13.8V/27.6V Nominal
Operating Temperature	0°C to 49°C

Dimensions	48.3 cm x 34.2 cm x 13 cm (19" x 13.5" x 5")
Weight	6.10 kg (13.47 lbs)

Performance Ratings

UL 294 Performance Levels:

Model	Product Type	Line Security	Destructive Attack	Endurance	Standby Power
DX600ULMOM8ECB	Power Supply	I	I	IV	III (when used with 12Ah battery "output is limited to maximum 4 Amps" III (when used with 17.2Ah battery

CAN/ULC-60839-11-1 Performance Grades:

Model	Product Type	Grade	Grade Achievement
DX600ULMOM8ECB	Power Supply	3 (when used with 12Ah battery) "output is limited to maximum 4 Amps" 3 (when used with 17.2Ah battery)	Connect AC & Battery Trouble Outputs to a Grade 3 Control Unit, to achieve Grade 3.

DX600ULMOM8ECB

REGULATED POWER SUPPLY CHARGER
UL/ULC LISTED AS FOLLOWS:
UL294, CAN/ULC-60839-11-1, CAN/ULC-S533
POWER SUPPLY FOR ACCESS CONTROL SYSTEM

This Product must be installed in compliance with Article 760 of the National Electrical Code NFPA70, and all applicable codes, CSA C22.1, Safety Standard for Electrical Installations, Canadian Electrical Code.



NOTE: PLEASE REFER TO DX600UL INSTALLATION MANUAL, PART NO:PX6000 REV:01

DATE OF MFG:
PART NO:PX6004 REV:01



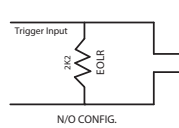
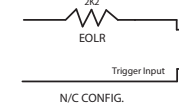
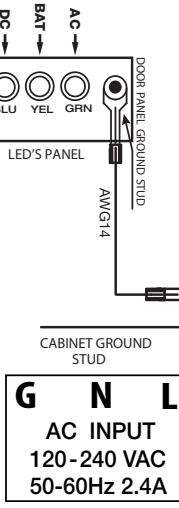
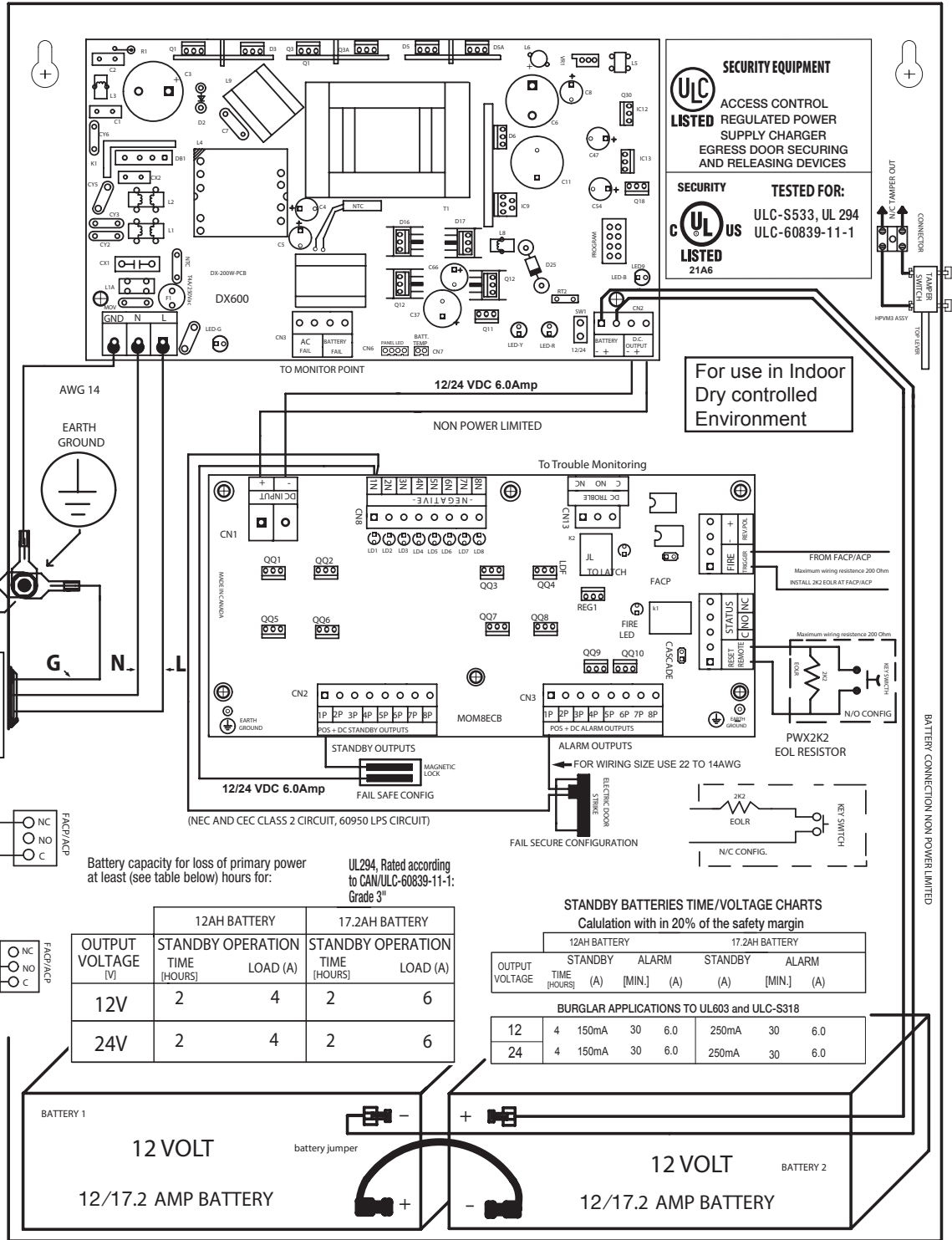
REG# T1880468-02



REG#T1880468-01



REG# T1880468-03



Battery capacity for loss of primary power at least (see table below) hours for: **UL294, Rated according to CAN/ULC-60839-11-1; Grade 3***

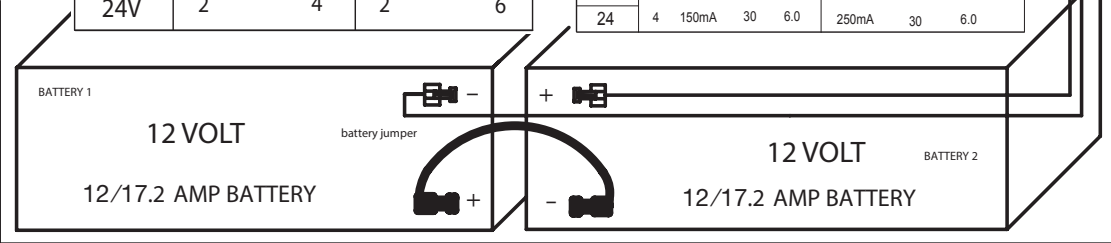
OUTPUT VOLTAGE (V)	12AH BATTERY		17.2AH BATTERY	
	STANDBY OPERATION TIME (HOURS)	LOAD (A)	STANDBY OPERATION TIME (HOURS)	LOAD (A)
12V	2	4	2	6
24V	2	4	2	6

STANDBY BATTERIES TIME/VOLTAGE CHARTS
Calculation with in 20% of the safety margin

OUTPUT VOLTAGE	12AH BATTERY		17.2AH BATTERY	
	STANDBY TIME (HOURS)	ALARM [MIN.] (A)	STANDBY TIME (HOURS)	ALARM [MIN.] (A)
12	4	150mA	30	6.0
24	4	150mA	30	6.0

BURGLAR APPLICATIONS TO UL603 and ULC-S318

12	4	150mA	30	6.0	250mA	30	6.0
24	4	150mA	30	6.0	250mA	30	6.0



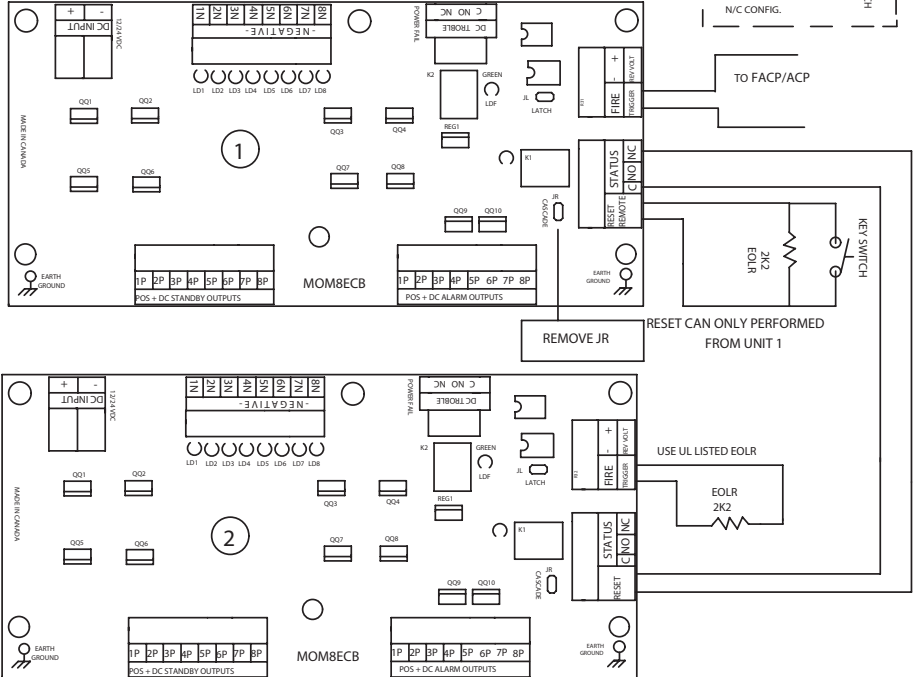
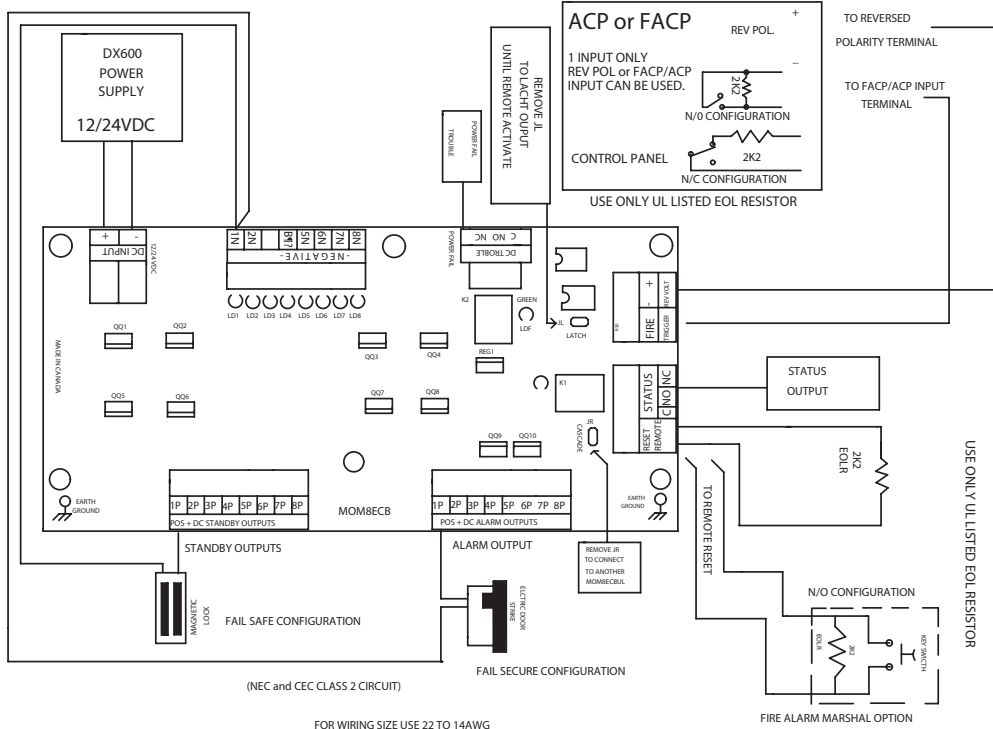
KEEP POWER LIMITED WIRING FROM NON POWER LIMITED WIRING AT LEAST 0.25" INCH APART

*Design and specifications are subject to change without notice.

TYPICAL APPLICATION WIRING DIAGRAM

2 OR MORE DX600ULMOM8ECB CONNECTED IN CASCADE

PART NO: PX6005 REV:01



KEEP POWER LIMITED WIRING FROM NON POWER LIMITED WIRING AT LEAST 0.25" INCH APART

FIG.1

*Design and specifications are subject to change without notice.